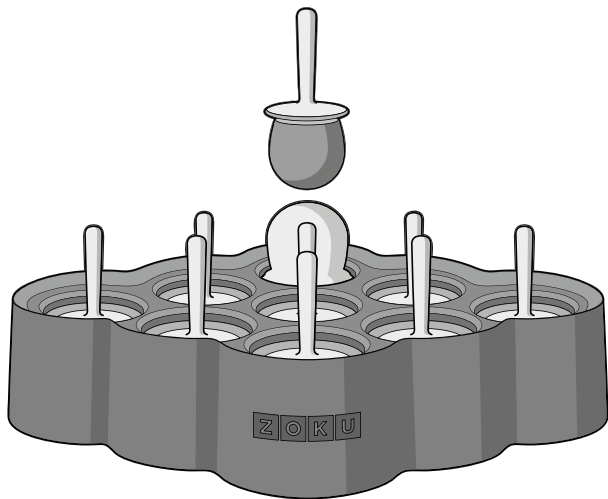


# ZOKU®

## INSTRUCTION MANUAL



**MINI POP MOLDS**

[www.zokuhome.com](http://www.zokuhome.com)

# Important Safeguards

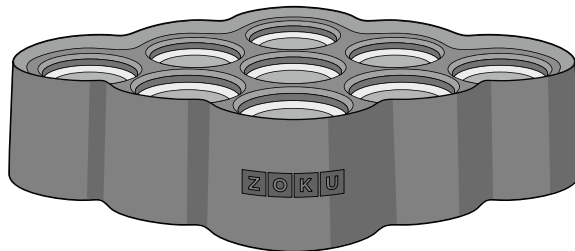
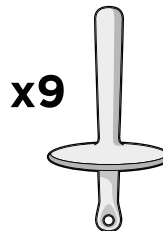
Please read all instructions carefully before using.

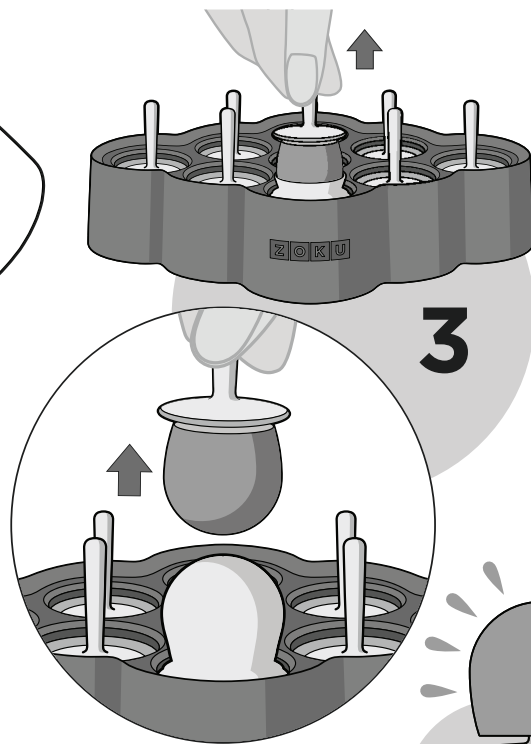
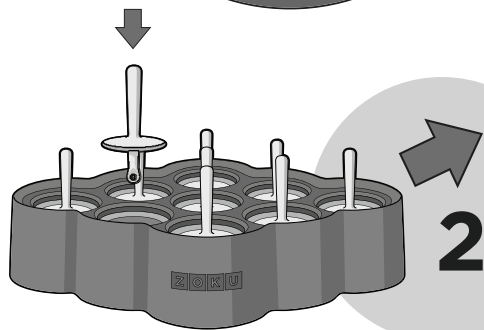
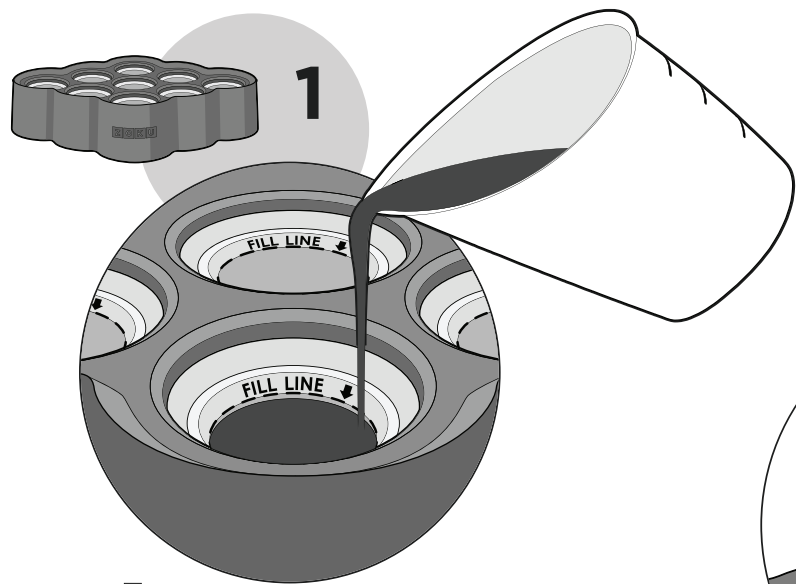
**SAVE THESE INSTRUCTIONS FOR FUTURE REFERENCE.**

**⚠ WARNING: THIS PRODUCT IS NOT A TOY. TO AVOID INJURY, CLOSE ADULT SUPERVISION IS NECESSARY AT ALL TIMES WHEN ANY APPLIANCE IS USED BY OR NEAR CHILDREN.**

**⚠ WARNING: CHOKING HAZARD – Breakage of the unit could produce small parts that could result in a choking hazard for small children. Keep small parts away from children under 3 years of age.**

- **DO NOT MICROWAVE THE UNIT.**
- **DO NOT WASH IN THE DISHWASHER.**
- **USE CAUTION WHEN HANDLING HOT LIQUIDS.**
- Do not use sharp objects or utensils inside the Zoku Mini Pop Molds.
- Do not use the Zoku Mini Pop Molds over flames, hot plates, or stoves, or expose to a heat source.
- Wash with mild soap only. Never clean with scouring powders or hard implements.
- After washing, dry the Zoku Mini Pop Molds thoroughly before placing them in the freezer.
- Do not drop the Zoku Mini Pop Molds.
- This product is intended for household use only.





## Creative Tips

While fruit juices make great mini popsicles, you can use Zoku's Mini Pop Molds to create other mini pop treats! **BE CREATIVE!**

**Mini Chocolates & Candy Lollipops** – Fill molds with melted chocolate, or melted, liquid candy. Add fruit chunks, candy crumbles, or nut bits. Use with or without sticks. Let stand in refrigerator until hardened. Remove by pressing on silicone molds from the underside of the Mini Pop Mold Base.

**Ice Cream Pops** – Fill molds with your favorite ice cream (melted or from recipe). Freeze for 10+ hours, then remove by pressing on silicone molds from the underside of the Mini Pop Mold Base.

**Mini Ice Spheres** – Fill molds with water, freeze without using a Mini Pop Stick, then remove by pressing on silicone molds from the underside of the Mini Pop Mold Base. Great for chilling drinks!

## Recipe Ideas

For delicious recipes & tips visit the blog on Zoku's website:  
[www.zokuhome.com](http://www.zokuhome.com)

## Cleaning and Storage

### **DO NOT WASH THE ZOKU MINI POP MOLDS IN THE DISHWASHER.**

Clean the Mini Pop Mold Base and Mini Pop Sticks with mild soap and warm water. Do not use scouring powders, pads, or hard implements. It may help to invert the silicone mold cavities for easy cleaning. Dry the Mini Pop Mold Base and Sticks completely before placing in the freezer.

## Troubleshooting

**The silicone mold cavities overflowed while freezing (Mini Pop Sticks 'floating' or covered in frozen liquid).** The silicone mold cavities may have been overfilled. Be sure to fill to a level no higher than indicated by the fill line. Liquids without any sugar, and liquids using artificial sweeteners expand more during freezing. Try filling the silicone mold cavities to a level slightly lower than the fill line.

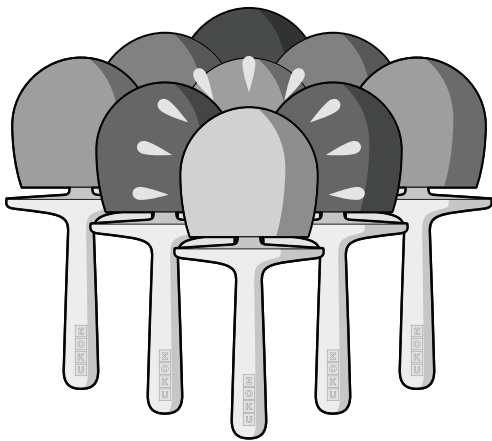
**Pops are difficult to remove.** (See above, silicone mold cavities may have been overfilled) To remove pops from overflown silicone mold cavities, try wiggling the Mini Pop Sticks back and forth, or rotating them in a circle like a joystick - this will break any excess frozen liquid and allow release from the silicone mold cavities. You may also try lifting the Mini Pop Mold Base and pressing on the silicone mold cavities from the underside of the unit.

**Removing pops without a stick.** You may want to make some types of pops without using a Mini Pop Stick (see Creative Tips). To remove these pops, lift the Mini Pop Mold Base and press on the silicone mold cavities from the underside of the unit. It may help to hold the unit upside down over a bowl to catch the mini pops as they release.

**Liquid is trapped inside the Mini Pop Mold Base.** Use a small Phillips Head screwdriver to disassemble the base. Clean and dry the components, then reassemble.

**The silicone mold has pulled free from the Mini Pop Mold Base.** Use a small Phillips Head screwdriver to disassemble the base. Drain, clean and dry the components; realign the silicone mold cavities into their slots, then reassemble.

# ZOKU®



© 2013 by Zoku, LLC

**ZOKU, LLC** Hoboken, NJ 07030

[www.zokuhome.com](http://www.zokuhome.com)

All Rights Reserved.

**U.S. and International Patents Pending.**